

Economical Thermal Transfer Printer



Featuring:

State-of-the-art, high-resolution print head technology.

Low cost of ownership, and rugged, proven hardware and software designs.

Self contained, (two component) space saving design, printer and power supply.

Large 600 meter ribbon capacity.

Precise ribbon advance control for the most accurate and economical use of ribbon.

PR5 handset with USB

Specifications

Dimensions:

Height	8.08" (205mm)
Width	6.30" (160mm)
Depth	7.95" (202mm)
Weight	15 lbs, 7 kg

Electrical Standard

110/220/240 V 50/60 Hz 250 Watts

CE Certified

Air Supply

30-80 psi

Print Area

Intermittent Motion:

Width	2.08" (53mm)
Length	1.18" (30mm)

Continuous Motion:

Width	2.08" (53mm)
Length	1.97" (50mm)

Print Dot Density

12 dots/mm (300 dpi) horizontally and vertically

Print Speed

Up to 400 mm/sec

Ribbon

Up to 600 meter (1970' roll)

Memory

Printer: 200 kb

JDS (Jaguar Design Software) PCMCIA Card—1 Mb card included

Modes of Operation

Easy to read backlit LCD handset
Direct connection to PC

Outputs

Machine on error (failsafe) - image ready, cassette open, power on, etc.
Head up/down
Inhibit (printing or ready to print.)

Inputs

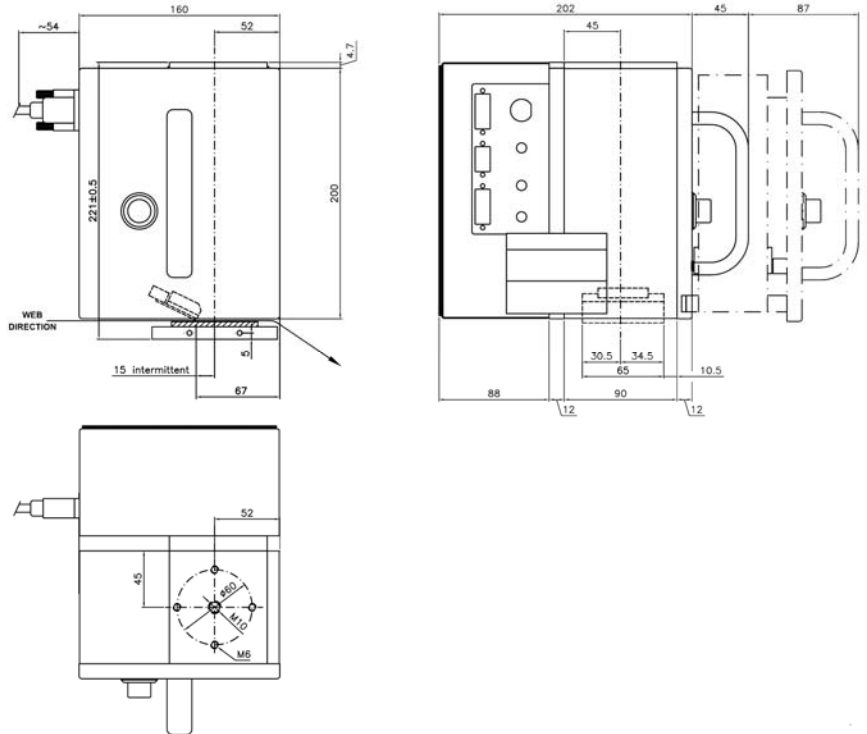
Print Signal

Character Sizes

6-72 pt. high (width scaleable)

Functions

Normal and obligatory text
Date/real time clock
Graphics images - BMP format
0, 90, 180, 270 rotation
Extended date codes



Text

Four (4) resident fonts = (scaleable in width)

Bar Codes

RSS14, RSS14 truncated, RSS14 limited, RSS14 stacked, RSS14 stacked omni-directional, EAN-8, EAN-13, EAN-128, CODE 128, CODE 39, 1-2 of 5, Code 93, DUN 14, ISBN, UPC-A

Communications

RS-232 (PC)
Multi-language (8) support standard

Options

Remote image loading with memory card
Handset PR-1 power supply
PC/PR-1 communications cable



Norwood Marking Systems, A Division of ITW
2538 Wisconsin Avenue
Downers Grove, IL 60515
Phone: (630) 968-0646
Toll Free: (800) 626-3464
Fax: (630) 968-7672